

# SPHERE Data Center

N. Meunier

Context & motivation

Timeframe

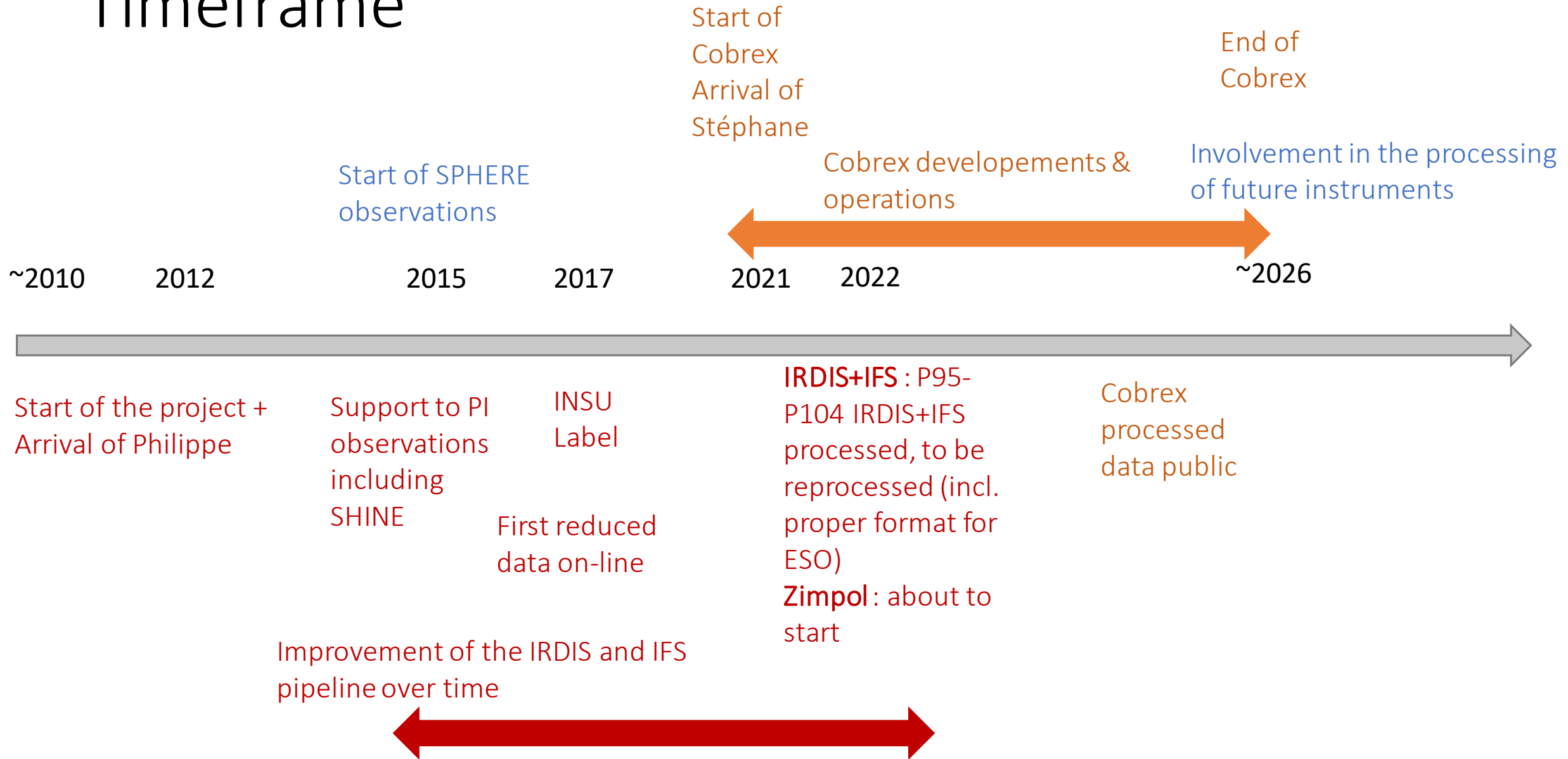
General overview

Articulation with Cobrex

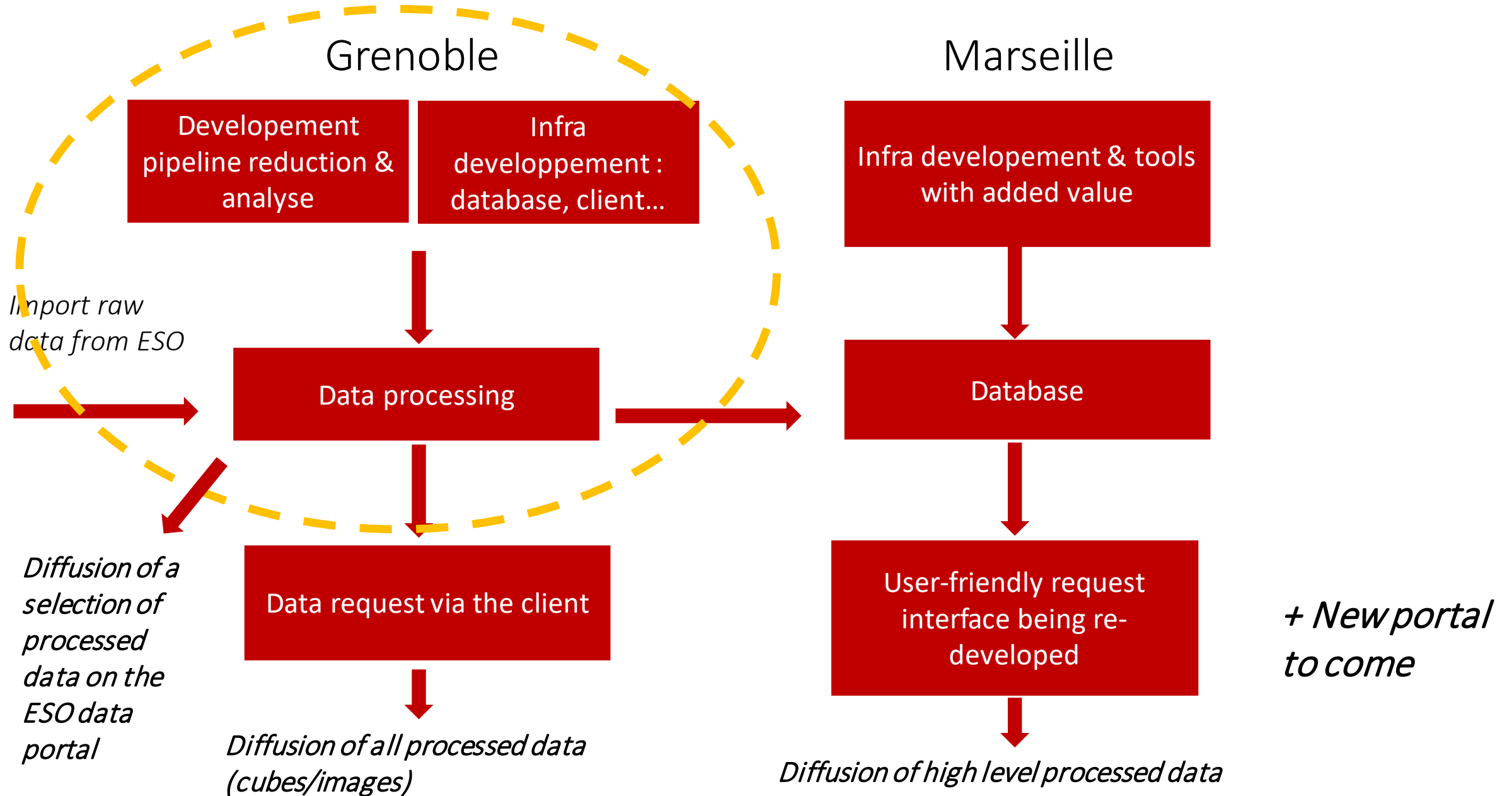
# Context and motivation

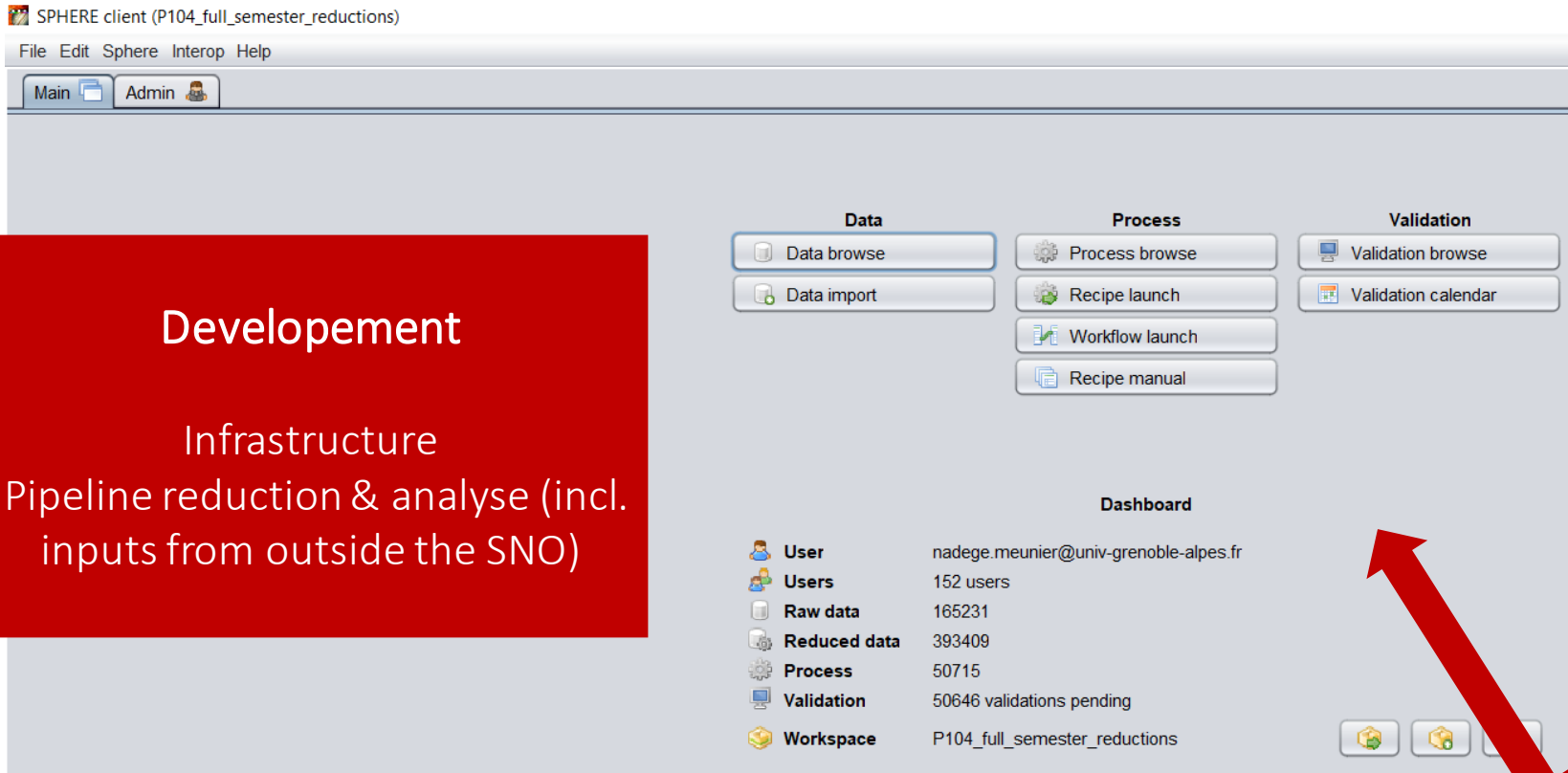
- *SNO* = National service with **INSU Label** → produce data that are made **publicly available** with no restriction
- *People involved* in the data processing mostly in Grenoble (D. Albert, P. Delorme, J. Milli, N. Meunier, D. Mouillet -> **Duty service**) + Nice (E. Lagadec) → Data processing center
- *Partners* : OCA/Lagrange, PYTHEAS/LAM, **Obs. Lyon/CRAL, Obs. Paris/LESIA**
- **Motivation** = SPHERE is complex (3 instruments, many modes) → help users, increase scientific return by processing all data and make them available to all  
→ On-request processing (ex. SHINE) and processing of public data
- *Evaluation by INSU in progress* → **we requested a change in name « High Contrast Data Center » (HC-DC)** to take other instruments into account (already the case in the Marseille database DIVA, integrated in the SNO, and to anticipate future Cobrex GPI processed data + possibly other instruments)

# Timeframe



# Infrastructure and general organisation / SPHERE DC





## Development

Infrastructure  
Pipeline reduction & analyse (incl. inputs from outside the SNO)

*Automation* (large amount of data, association rules ...)  
*Traceability* (parameters, workflows, inputs/outputs ...)

## University infrastructures

Data storage >100 To  
Computing grid (luke)

